

Specifications & Capacities

MODELS	OL4100	OL5300	OL6800
Dryer Length	41'	48'	69'
Dryer Width	132" (11')	152"(12'4")	202"(17')
Dryer Height without walls	18'11"	22'6"	24'
Heat Fan HP	1x60 HP	2X60 HP	2X100 HP
Cool Fan HP	1X25 HP	2X25 HP	2X30 HP
Fill Height @ 48" dryer walls			
Avg/Max Burner	3.5/6.5	9/12.5	20
MBTU/HR			
Drying Mode Corn	OL4100	OL5300	OL6800
Drying Capacity Shelled Corn 20%-15% Dry bu/hr	up to 900 bu/hr	up to 1600 bu/hr	up to 3200 bu/hr
Dry Bushels in 24 Hours	21600 bu/day	38400 bu/day	76800 bu/day
Drying Capacity Shelled Corn 25%-15% Dry bu/hr	up to 600 bu/hr	up to 1000 bu/hr	up to 2400 bu/hr
Dry Bushels in 24 Hours	14400 bu/day	24000 bu/day	57600 bu/hr
Drying Mode Canola	OL4100	OL5300	OL6800
Drying Capacity Canola 15%-10% Dry bu/hr	up to 1000 bu/hr	up to 1800 bu/hr	up to 3200 bu/hr
Dry Bushels in 24 Hours	21600 bu/day	43200 bu/day	76800 bu/day
Drying Capacity Canola 20%-10% Dry bu/hr	up to 600 bu/hr	up to 1000 bu/hr	up to 2400 bu/hr
Dry Bushels in 24 Hours	14400 bu/day	24000 bu/day	57600 bu/hr

Disclaimer

The information contained herein is intended to assist our customers in selecting the grain drying system that they believe best meets their unique preferences and needs. The performance figures and capacities presented in this document are only estimates, based on calculated simulations and past customer experience, and do not constitute express or implied warranties. Many factors influence the grain drying process, including ambient temperature, relative humidity, grain variety, grain quality, grain temperature, dryer operating temperatures, dryer add-ons and accessories, and dryer condition, maintenance and operation.

Based On 230 deg F (110 deg C) Plenum temperature



**ULTIMATE EFFICIENT
GRAIN DRYER**

Double Flow GRAIN & SEED DRYER

WHY CHOOSE US?

Oakland Products has evolved from a long history in manufacturing, welding, sheet metal work, 3D Drafting, Grain drying, electronics & assembling.

This team of experienced people have worked diligently to build the ultimate Grain Dryer.

Get IN TOUCH



PH: 1-204-739-3818
Fax: 1-204-483-2798



nathanh@oaklanddryers.ca
nathan@oaklanddryers.ca

ENERGY SAVER



Up to 50% fuel savings compared to a mixed flow or screen dryer.

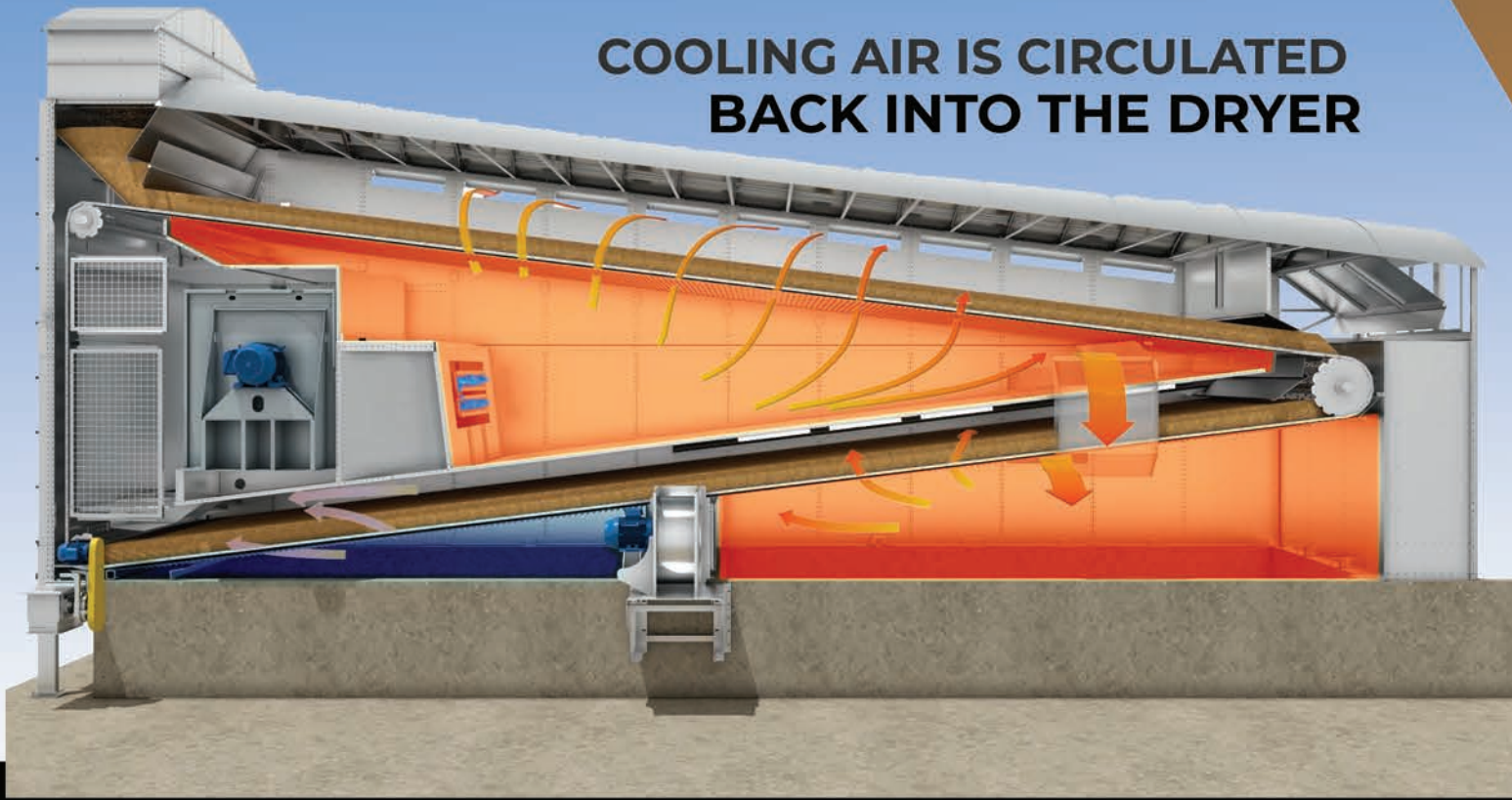


WWW.OAKLANDDRYERS.CA



Call For More Info
204-739-3818

**COOLING AIR IS CIRCULATED
BACK INTO THE DRYER**



Electronic & GAS TRAIN SYSTEM FULLY CSA APPROVED

High Efficiency Maxon Burner. Designed with stringent environmental regulations.

VFD on all the motors. Comes standard to control every aspect of any drying condition.

Heat recirculation. Heat claimed from the cooled dry grain is recirculated back into the Dryer.

Reduced Fire Risk. Mechanically conveyed, not creating hot spots or bridging.

Low Profile Dryer. Close to ground not requiring big grain legs and conveyers to service.

Computer based HMI. Easily monitor and have ultimate control of dryer.

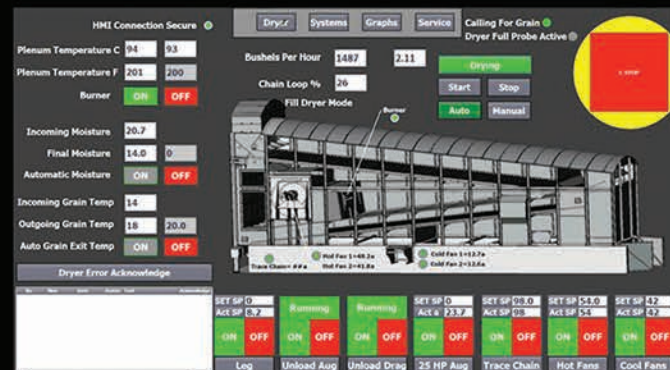
Ship anywhere. Dryer can be split into 2 pieces and shipped anywhere in North America.

Reduced down time. No belts, no augers no metering rolls to maintain = less down time.

Consistency Drying. Air openings with full width of dryer every 2.5" ensures even consistent drying.

Continuous Run. From -30 deg C to +30 deg C 24 hours a day with no downtime.

Monitor THE DRYER



Ability to monitor the dryer from a smart phone or any other computer where you have Internet connection.

Advantages TO AN OAKLAND DRYER

Even though the dryer operation is timed, synchronized and programmed to have its numerous operations like the burner, blowers and mechanical chain running around the clock, it still uses common parts which can usually be sourced at your local supplier.



Shipping unit anywhere

Unbolt the top end of the dryer from the bottom – therefore saving money when shipping the unit.



Variable Frequency Drive

All our motors are VFD (Variable Frequency Drive).



Controlling the grain depth

You have the option of controlling the grain depth on the bed.



Auto shutoff

Equipped with multiple safeties to ensure safe start-up and safe operation.